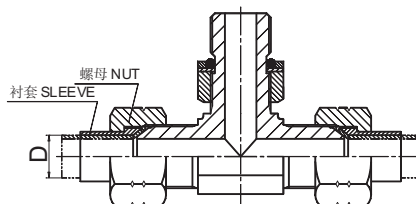
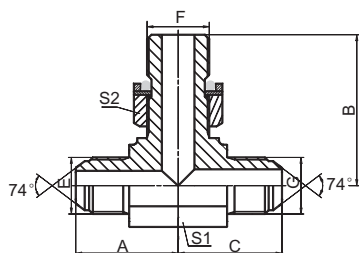


过渡接头 ADAPTER



AJHJ-OG

JIC 外螺纹 / 公制外螺纹 O 形圈 / JIC 外螺纹
JIC MALE/METRIC MALE O-RING/JIC MALE

代号 PART NO.	螺纹 THREAD			O 形圈 O-RING		尺寸 DIMENSIONS				
	E	F	G		F 端	A	B	C	S1	S2
AJHJ-04-10-04OG	7/16"X20	M10X1	7/16"X20		8.1X1.6	24.5	26.5	24.5	11	14
AJHJ-04-12-04OG	7/16"X20	M12X1.5	7/16"X20		9.3X2.4	26.6	32	26.6	14	17
AJHJ-05-10-05OG	1/2"X20	M10X1	1/2"X20		8.1X1.6	26.6	28.8	26.6	14	14
AJHJ-05-12-05OG	1/2"X20	M12X1.5	1/2"X20		9.3X2.4	26.6	32	26.6	14	17
AJHJ-05-14-05OG	1/2"X20	M14X1.5	1/2"X20		11.3X2.4	26.6	32	26.6	14	19
AJHJ-06-14-06OG	9/16"X18	M14X1.5	9/16"X18		11.3X2.4	26.9	32	26.9	14	19
AJHJ-06-16-06OG	9/16"X18	M16X1.5	9/16"X18		13.3X2.4	28.5	34.8	28.5	16	22
AJHJ-08-16-08OG	3/4"X16	M16X1.5	3/4"X16		13.3X2.4	32	36	32	19	22
AJHJ-08-18-08OG	3/4"X16	M18X1.5	3/4"X16		15.3X2.4	32	37	32	19	24
AJHJ-10-18-10OG	7/8"X14	M18X1.5	7/8"X14		15.3X2.4	37.8	39.5	37.8	22	24
AJHJ-10-22-10OG	7/8"X14	M22X1.5	7/8"X14		19.3X2.4	37.8	40.2	37.8	22	27
AJHJ-12-22-12OG	1.1/16"X12	M22X1.5	1.1/16"X12		19.3X2.4	44.2	43.5	44.2	27	27
AJHJ-12-27-12OG	1.1/16"X12	M27X2	1.1/16"X12		23.5X3	44.2	48.5	44.2	27	32
AJHJ-16-27-16OG	1.5/16"X12	M27X2	1.5/16"X12		23.5X3	49	52	49	33	32
AJHJ-16-33-16OG	1.5/16"X12	M33X2	1.5/16"X12		29.2X3	49	52.5	49	33	41
AJHJ-20-42-20OG	1.5/8"X12	M42X2	1.5/8"X12		38.5X3	55.5	57.2	55.5	41	50
AJHJ-24-48-24OG	1.7/8"X12	M48X2	1.7/8"X12		44.5X3	62.5	62.7	62.5	48	55

注：螺母及衬套需另行订货。管子直径 D 为公制时，配用螺母及衬套分别选用 NB200、NB500。管子直径为英制时，配用螺母及衬套分别选用 NB200、NB300。 Nut and sleeve should be ordered separately. The nut NB200 and sleeve NB500 is suitable for metric tube, the nut NB200 and sleeve NB300 is suitable for inch tube.